



**UNITED BRASS WORKS, INC.**  
 714 S. Main St., Randleman, NC 27317  
 Tel: 800-334-3035 Fax: 800-498-4696 www.ubw.com



## Model 850 1/2" Steam Trap

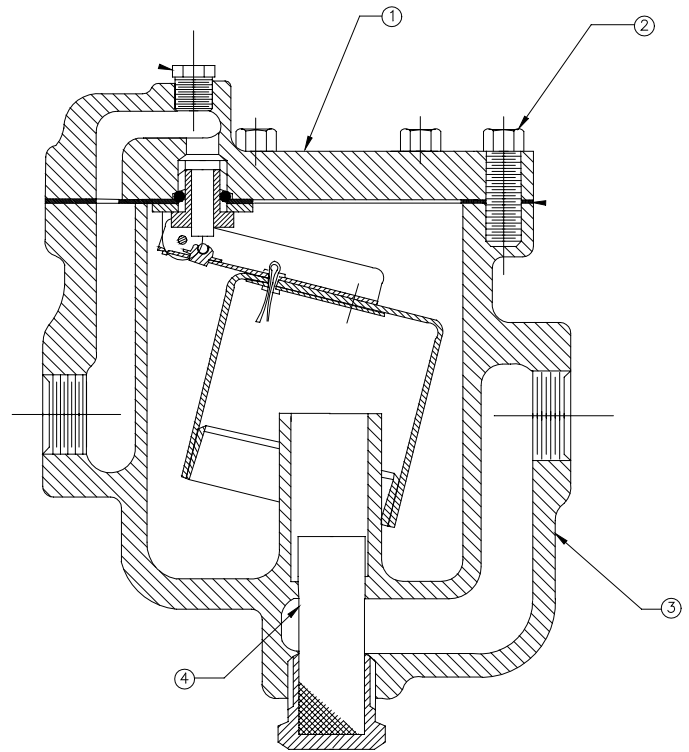
**150WSP Body Rating**  
**Operating Range 50 – 125PSI**  
**Ductile Iron Construction**  
**Stainless Steel Ball & Seat**

*E-Coated Inside & Out For Corrosion Resistance.*

*Replacement cover assembly Model 850AL.*

### MATERIAL LIST

NO.	DESCRIPTION	MATERIAL
1	Cover Assembly	Ductile Iron
2	Cap Screw	Stainless Steel
3	Body	Ductile Iron
4	Strainer	Stainless Steel



### Operating Pressure

Model	PSI	60	80	100	125
850 1/2"	Pounds Condensate Per Hour	384	416	466	496



**UNITED BRASS WORKS, INC.**  
 714 S. Main St., Randleman, NC 27317  
 Tel: 800-334-3035 Fax: 800-498-4696 www.ubw.com



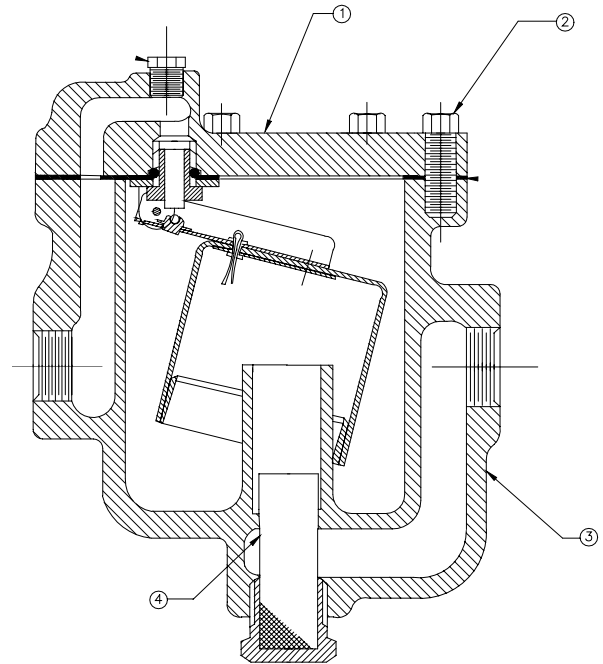
## Model 849 1/2" Steam Trap

**150WSP Body Rating**  
**Operating Range 5 – 50PSI**  
**Ductile Iron Construction**  
**Stainless Steel Ball & Seat**

*E-Coated Inside & Out For Corrosion Resistance.*  
*Replacement cover assembly Model 850F.*

### MATERIAL LIST

NO.	DESCRIPTION	MATERIAL
1	Cover Assembly	Ductile Iron
2	Cap Screw	Stainless Steel
3	Body	Ductile Iron
4	Strainer	Stainless Steel



### Operating Pressure

Model	PSI	5	10	20	30	40	50
849A 1/2"	Pounds Condensate Per Hour	383	461	566	629	681	765



**UNITED BRASS WORKS, INC.**  
 714 S. Main St., Randleman, NC 27317  
 Tel: 800-334-3035 Fax: 800-498-4696 www.ubw.com



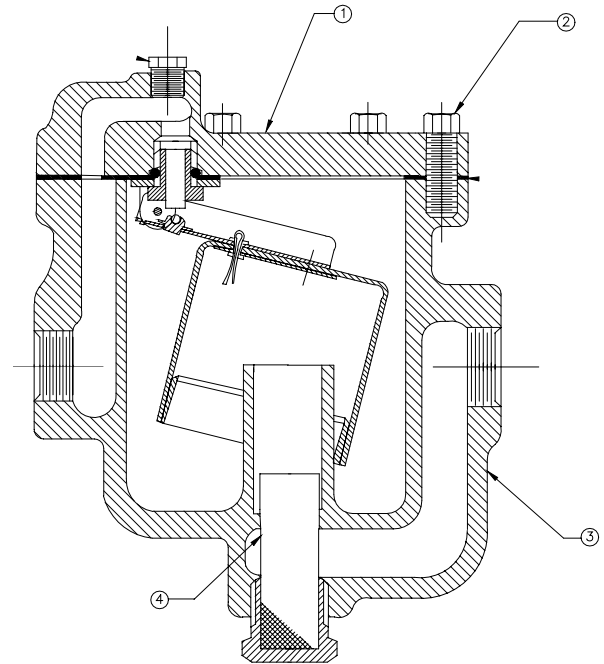
## Model 849A 3/4" Steam Trap

**150WSP Body Rating**  
**Operating Range 50 – 125PSI**  
**Ductile Iron Construction**  
**Stainless Steel Ball & Seat**

*E-Coated Inside & Out For Corrosion Resistance.*  
*Replacement cover assembly Model 850AL.*

### MATERIAL LIST

NO.	DESCRIPTION	MATERIAL
1	Cover Assembly	Ductile Iron
2	Cap Screw	Stainless Steel
3	Body	Ductile Iron
4	Strainer	Stainless Steel



### Operating Pressure

Model	PSI	60	80	100	125
849A 3/4"	Pounds Condensate Per Hour	384	416	466	496



**UNITED BRASS WORKS, INC.**  
 714 S. Main St., Randleman, NC 27317  
 Tel: 800-334-3035 Fax: 800-498-4696 www.ubw.com



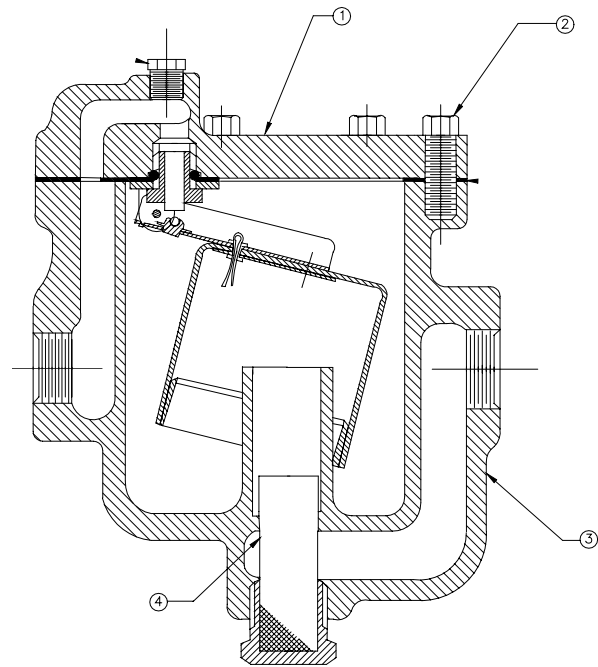
## Model 849B 3/4" Steam Trap

**150WSP Body Rating**  
**Operating Range 5 – 50PSI**  
**Ductile Iron Construction**  
**Stainless Steel Ball & Seat**

*E-Coated Inside & Out For Corrosion Resistance.*  
*Replacement cover assembly Model 850F.*

### MATERIAL LIST

NO.	DESCRIPTION	MATERIAL
1	Cover Assembly	Ductile Iron
2	Cap Screw	Stainless Steel
3	Body	Ductile Iron
4	Strainer	Stainless Steel



### Operating Pressure

Model	PSI	5	10	20	30	40	50
849A 3/4"	Pounds Condensate Per Hour	383	461	566	629	681	765