

POWERS

A WATTS INDUSTRIES CO.

TECHNICAL INSTRUCTIONS

HYDROPANEL™ II CORNER MOUNT SHOWER SYSTEM

INSTRUCTIONS

A. HYDROPANEL CORNER-MOUNT INSTALLATION w/o EXTENSION AND/OR OVERLAYS.

- Mount Corner-mounting brackets to wall. To find proper distance, measure distance "X" between holes on upper and lower (B and C, See Figures 1 & 2) fittings of outlet pipe (for 900 valve, lower fitting is sweated on tub-side of the body).
- 1a. Corner mounting bracket anchors provided by others.
- Mount piping assembly to corner brackets, using larger screws and nut for top portion, and smaller screws and nuts for bottom. (For 900 valve, use only large screws and nuts).
- Replace straight end caps with corner end caps and mount to shrouding (do this **before** mounting shrouding to piping).
- Attach shrouding to piping with screw at A & D (See Figure 1).
- Follow installation instructions in TI450-900 V1 beginning with TEST THE SYSTEM.**

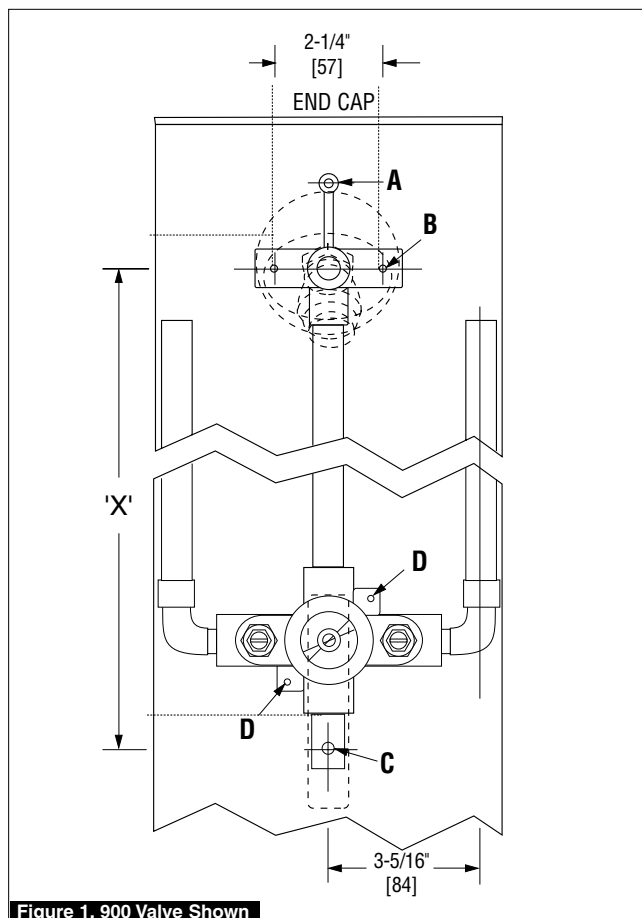


Figure 1. 900 Valve Shown

B. HYDROPANEL CORNER-MOUNT INSTALLATION w/EXTENSIONS AND/OR OVERLAYS.

- Follow steps 1 & 2 as outlined in "A".
- Mount corner-mounting brackets to wall. Use one bracket for the Hydropanel extension, and the second bracket if an overlay is needed. Measure the slot distances to determine placement. **DO NOT** remove the standard endcap. The endcap will act as the gasket between the overlay and the shrouding.
- Assemble U-brackets to corner bracket, using small screws and nuts (See Figure 3).
- Attach extension and/or overlay to bracket assembly.
- Hydropanels w/extensions require 1 Kit each.

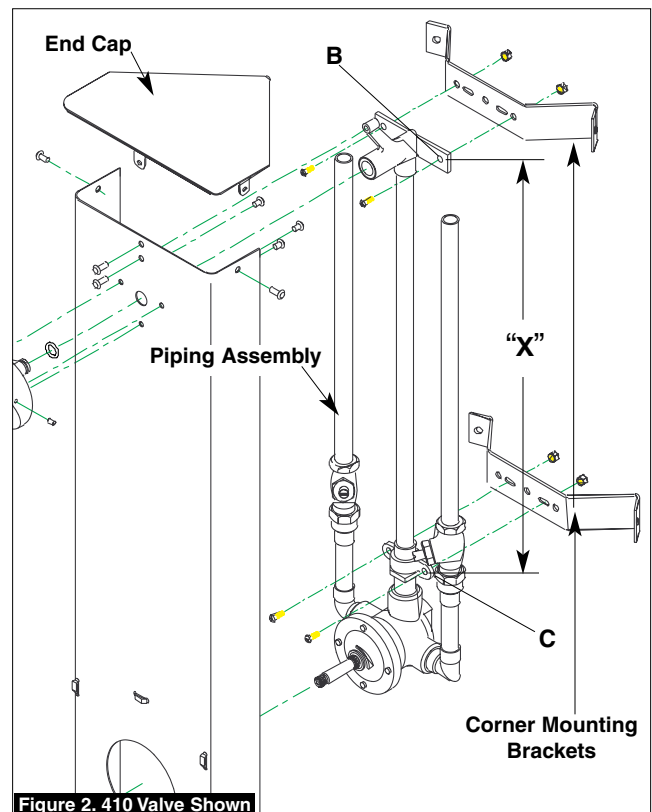


Figure 2. 410 Valve Shown

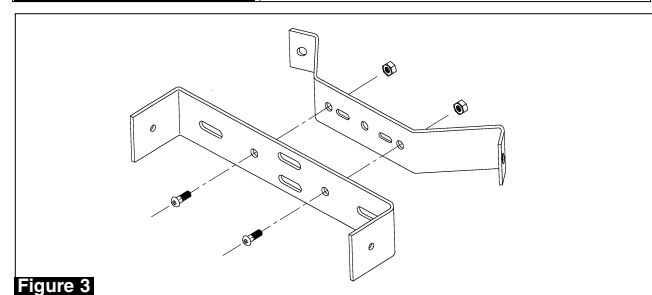


Figure 3

CALIFORNIA PROPOSITION 65 WARNING

WARNING: This product contains chemicals known to the State of California to cause cancer and birth defects or other reproductive harm.

(Installer: California law requires that this warning be given to the consumer.)

For more information: www.wattsind.com/prop65

POWERS
A WATTS INDUSTRIES CO.

© Reprinted March 2002 *Powers, a Watts Industries Co.*

USA Phone: 800.669.5430

www.powerscontrols.com

Canada Phone: 888.208.8927