

# POWERS

A WATTS INDUSTRIES CO.

## PRODUCT SPECIFICATION

# VisuGuard LCD®


## PRESSURE-BALANCING TEMPERING VALVE WITH LCD TEMPERATURE DISPLAY

### Model C473 (°C readout) or Model F473 (°F readout)

#### DESCRIPTION

Concealed, tub and shower or shower only pressure balancing mixer with battery operated, LCD® temperature display for use in shower applications. Features a single AAA alkaline battery for up to four years of continuous life. Rugged, brass valve body construction with diaphragm-type pressure balancing mechanism. Cartridge components manufactured of Celcon® to resist lime buildup and corrosion. Adjustable handle rotation stop reduces risk of handle over-adjustment. Opens in cold water position to maximize bather safety. Battery and temperature display are housed in an easy-access, watertight enclosure.

#### Valve trim features:

- Ergonomically-designed, chrome-plated, metal-cast face-plate and handle
- ADA-compliant handle operation 

#### SPECIFICATIONS

**Connections** ..... 1/2" NPT inlets and 1/2" sweat outlets

**Battery** ..... Single AAA alkaline

**Temperature Display** ..... 13 mm [1/2"] LCD readout  
(factory set for either °C or °F; accurate to 1/10 of a degree)

**Temperature Range** ..... -50-70 °C [-58-158 °F]

**Capacity** ..... 22 L/min @ 310 kPa  
[6.0 gpm @ 45 psi differential]  
(±1.9 L/min [±0.5 gpm])

**Maximum Inlet Temperature** ..... 82°C [180°F]

**Maximum Operating Pressure** ..... 862 kPa [125 psig]

**Handle Rotation Stop** ..... Standard and adjustable


**Wall Seal Gasket** ..... Supplied with valve

**Agency Approvals** ..... Meets requirements of ASSE 1016  
CSA approved, ADA-compliant handle

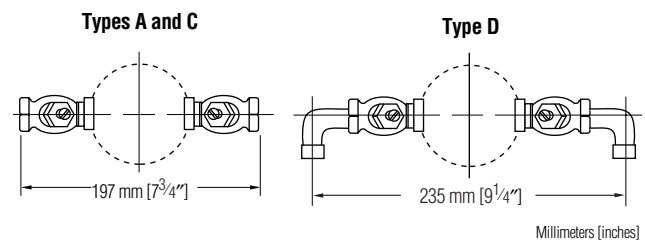
**Shipping Weight** ..... 2.1 kg [4.7 lbs.]



Model F473 shown

ADA-compliant handle operation 

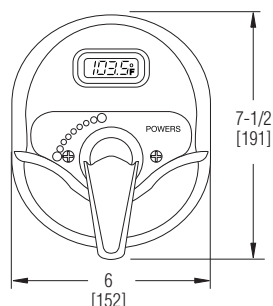
#### CHECKSTOP DIMENSIONS



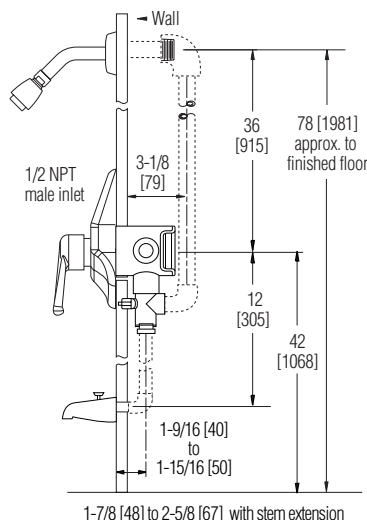
See reverse for complete specification code of valve and accessories.

#### DIMENSIONAL DATA (inches [millimeters])

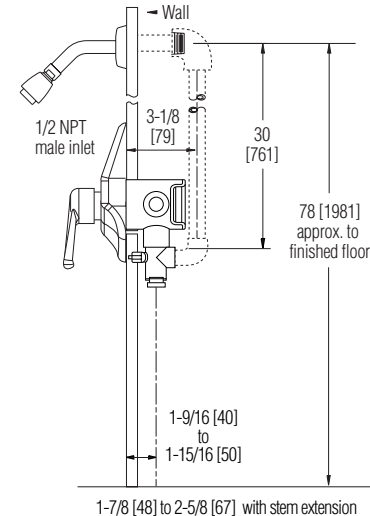
##### Front View



##### Tub and Shower Installation



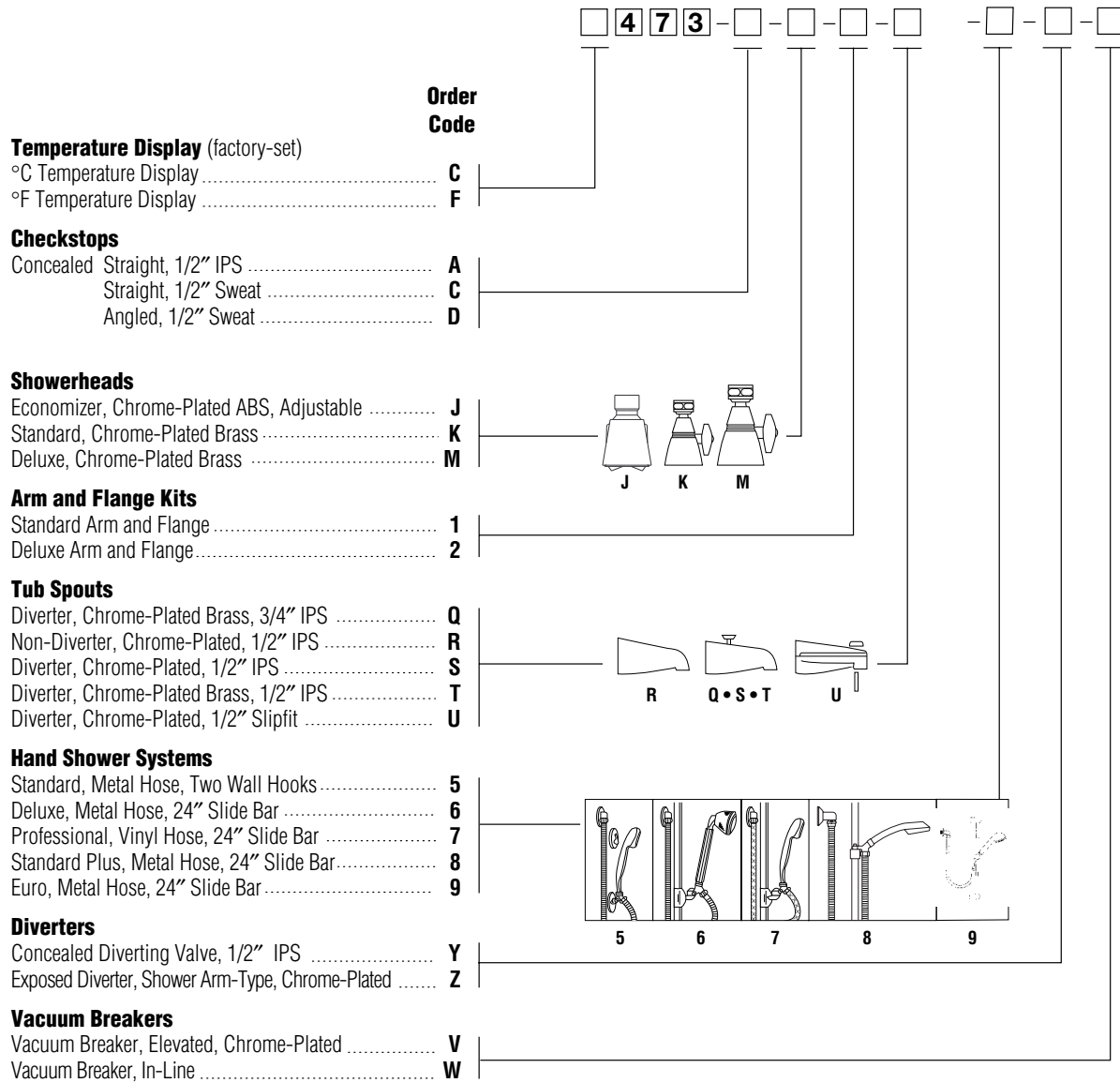
##### Shower Only Installation



All dotted line piping supplied by others.  
Celcon is a registered trademark of Hoechst Celanese Corporation.

# VisuGuard <sup>®</sup> LCD

## Pressure-Balancing Tempering Valves with LCD Temperature Display



ENGINEERING APPROVAL
<p>Project: _____</p> <p>Contractor: _____</p> <p>Architect/Engineer: _____</p>

<h1 style="margin: 0;">POWERS</h1> <p style="margin: 0; font-size: small;">A WATTS INDUSTRIES CO.</p>	<p style="font-size: x-small;">© Feb. 2002 Powers, a Watts Industries Co.</p> <p style="font-size: small;">USA Phone: 800.669.5430</p> <p style="font-size: small;">www.powerscontrols.com</p> <p style="font-size: x-small;">Canada Phone: 888.208.8927</p>
-------------------------------------------------------------------------------------------------------	--------------------------------------------------------------------------------------------------------------------------------------------------------------------------------------------------------------------------------------------------------------