

# POWERS

A WATTS INDUSTRIES CO.

## PRODUCT SPECIFICATION

### HYDROPANEL™ II SHOWER SYSTEM

with Hydroguard e420 Thermostatic Valve

#### PRODUCT DESCRIPTION

The Powers Hydropanel II Series 450-4200 Shower System combines Hydroguard T/P™ water control with the convenience of modular shrouding. Hydropanel II stainless steel shrouding provides a concealed shower system where in-wall piping does not exist or may not be practical. The single unit shower mounts easily onto preassembled copper tubing with just three screws.

Behind the shroud, a Hydroguard 420 valve uses a thermal actuator to provide tempered water and adjust to supply water variances. The powerful thermal actuator quickly senses any change in hot or cold supply pressure or temperature and responds to maintain the user-selected temperatures. The motor will also shut off the hot water if the cold water supply pressure fails.

Hydropanel II units can be used for new or retrofit applications, such as single showers or for complete shower rooms. They are ideal in schools, health clubs, factories, and remodeled older buildings. Optional hand-held showers mounted on vertical glide rails provide easy shower access for users with limited mobility. Optional Hydropanel II Modular Shrouding provides easy to install, interlocking stainless steel panels to conceal all exposed room piping.

#### FEATURES

- Installation requires minimal hardware: mount the brackets, connect the supply piping and hang the shrouding.
- All exposed surfaces are easy to clean brushed stainless steel or chrome plated.
- Construction includes a concealed handle rotation stop to guard against over adjustment of the handle.
- Single handle control and color coded dial offer quick and easy temperature selection.
- Fixed (vandal resistant) and swivel showerheads are available.
- Optional hand-held shower with flexible hoses mount on 18" glide rails for use in special applications.
- Optional Hydropanel II Modular Shrouding offers convenient configuration of horizontal and vertical panel to cover all exposed shower room piping. See form PS450SH for detail on Hydropanel II Modular Shrouding.
- All Hydropanel II units with Hydroguard 420 valves include a one year limited warranty.
- Hydroguard 420 valves meet the requirements of ANSI 112.18M and ASSE 1016 standards and are CSA certified.



Hydropanel II Model 450-4202 with Swivel Showerhead and Soapdish (available



Hydropanel II Model 450-4204 with Handshower Assembly and Soapdish (available with ADA com-

#### SPECIFICATIONS

**Hydropanel:** Brushed 18 Gauge 304 SS. Dimensions 31 1/8"H x 7 1/2"W x 6 1/2"D [791mm H x 191mm W x 165mm D].

**Piping:** 1/2" copper tubing.

**Showerhead:** *Fixed:* Chrome plated brass, maximum flow 2.5 gpm @ 80 psi [.16 l/s @ 552 kPa]. *Adjustable Swivel:* Chrome plated brass, 30° angle of rotation, maximum flow 2.5 gpm @ 80 psi [.16 l/s @ 552 kPa].

**Valve Assembly and Trim:** Hydroguard e420 Thermostatic Mixing Valve. Three port, heavy cast bronze body with brass stem. Standard in line checkstops. Concealed handle rotation stop. Chrome plated zinc tri-handle, or ADA compliant lever handle.

**Connections:** 1/2" NPT inlets and outlet.

**Valve Operation:** 5.25 gpm ± .25 @ 45 psi DP 50/50 mix. Maximum pressure 125 psig [862 kPa]. Maximum inlet temperature 190°F [88°C].

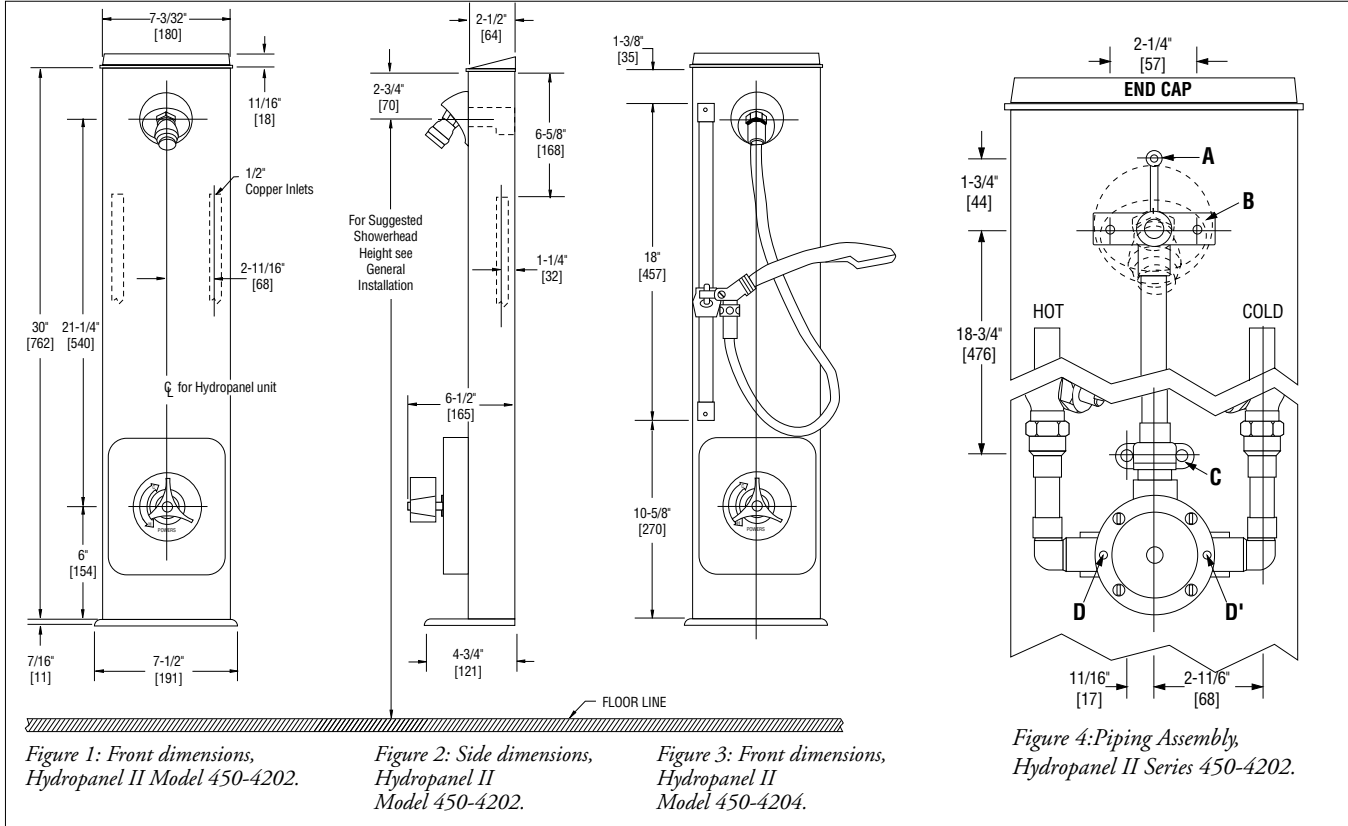
**Handshower:** Full spray with pushbutton water control. Minimum flow 2.0 gpm @ 20 psi [.13 l/s @ 138 kPa]. Maximum flow 2.5 gpm @ 80 psi [.16 l/s @ 138 kPa]. 60" [1499mm] reinforced vinyl hose with 1/2" chrome finished supply connections. 18" [457mm] chrome finished brass glide bar, self-tensioned for easy height adjustment.

## GENERAL INSTALLATION

The recommended minimum distance between the centerline of two Hydropanel II units is 36 inches [914mm]. Position units evenly between inlet supply piping.

Suggested showerhead heights (if not shown in architectural plans for shower room) are:

**Men** - 77" [1956mm]      **Youth** - 66" [1676mm]  
**Women** - 70" [1778mm]      **Youth** - 60" [1524mm]



## ENGINEERING APPROVAL

Project: \_\_\_\_\_

Contractor: \_\_\_\_\_



Architect/Engineer: \_\_\_\_\_

## ORDERING INFORMATION

### Hydropanel II with Hydroguard 420 Thermostatic Valve

with Metal Lever Handle

Order Code

- |                          |                                                                                                                                                      |                 |
|--------------------------|------------------------------------------------------------------------------------------------------------------------------------------------------|-----------------|
| <input type="checkbox"/> | Hydropanel II with Fixed Showerhead and Soap Dish . . . . .                                                                                          | <b>450-4210</b> |
| <input type="checkbox"/> | Hydropanel II with Fixed Showerhead, less Soap Dish . . . . .                                                                                        | <b>450-4211</b> |
| <input type="checkbox"/> | Hydropanel II with Swivel Showerhead and Soap Dish . . . . .                                                                                         | <b>450-4212</b> |
| <input type="checkbox"/> | Hydropanel II with Swivel Showerhead, less Soap Dish  . . . . . | <b>450-4213</b> |
| <input type="checkbox"/> | Hydropanel II with Hand Shower and Soap Dish  . . . . .         | <b>450-4214</b> |
| <input type="checkbox"/> | Hydropanel II with Hand Shower, less Soap Dish . . . . .                                                                                             | <b>450-4215</b> |

**POWERS**  
A WATTS INDUSTRIES CO.

© Feb. 2002 Powers, a Watts Industries Co.  
**USA Phone: 800.669.5430**  
**www.powerscontrols.com**  
Canada • Phone: 888.208.8927